



West Gate House, West Street, Ware SG12 9EE

£1,395

Taylor Phelps  
Estate Agency



1



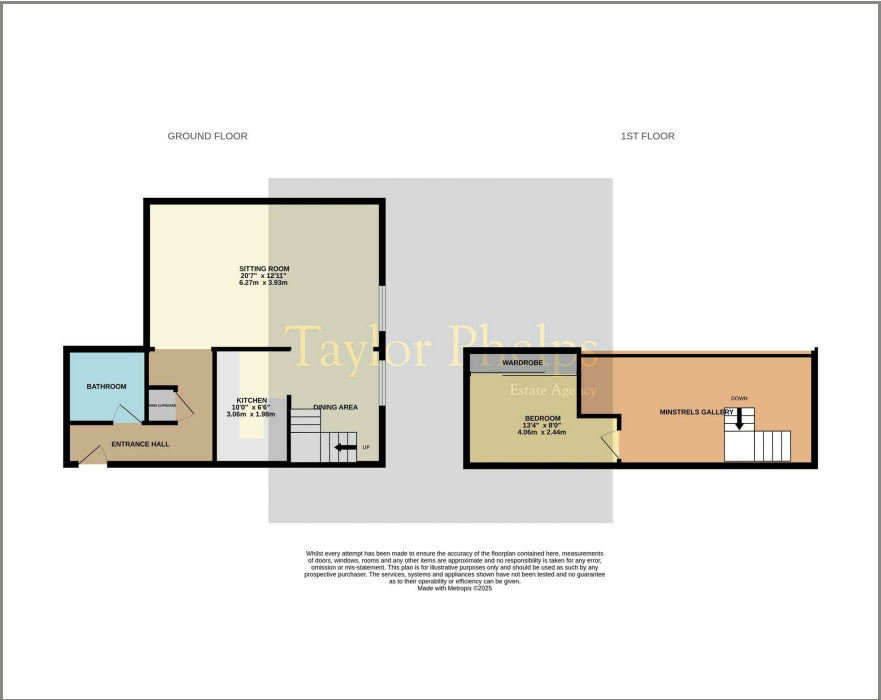
1

Taylor Phelps

Estate Agency



Floor Plan



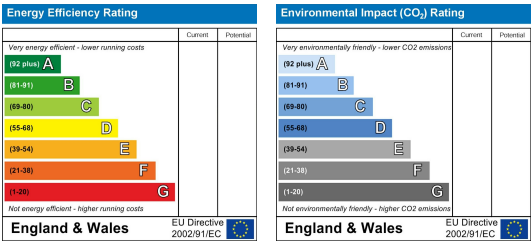
Area Map



Taylor Phelps are pleased to offer this outstanding duplex apartment, forming part of a prestigious Grade II listed conversion in the heart of Ware town centre. This apartment boasts a superb high specification throughout whilst retaining much of its original character features, with a spacious vaulted living room, good size bedroom and refitted bathroom. Externally the property is located within the heart of this vibrant town and is within close proximity of Ware train station which serves both Hertford East and London Liverpool Street.



Energy Efficiency Graph



These particulars, whilst believed to be accurate are set out as a general outline only for guidance and do not constitute any part of an offer or contract. Intending purchasers should not rely on them as statements of representation of fact, but must satisfy themselves by inspection or otherwise as to their accuracy. No person in this firm's employment has the authority to make or give any representation or warranty in respect of the property.